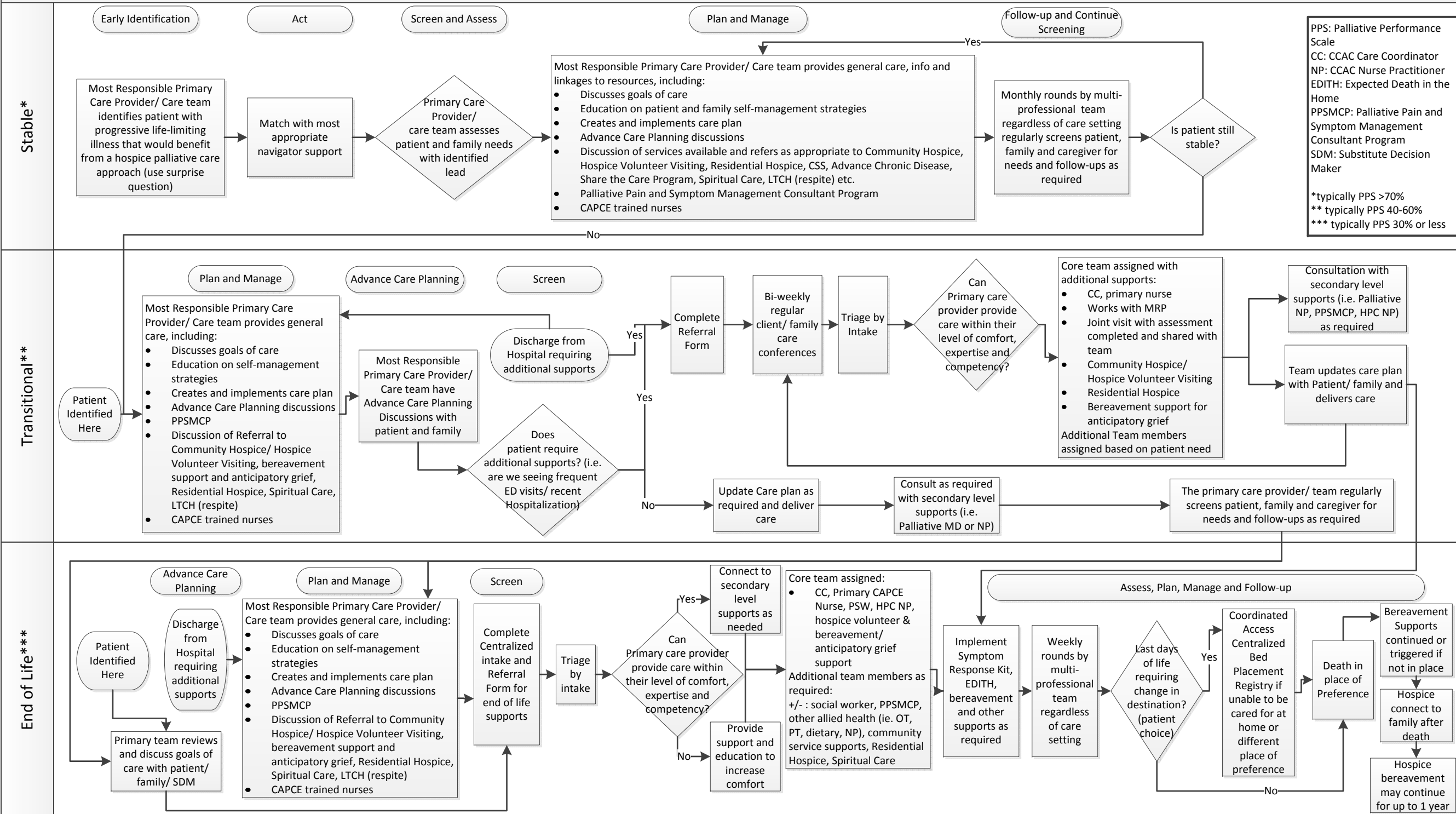


# South West Regional Hospice Palliative Care Pathways – Future State DRAFT v4 – Sept 30 2014



PPS: Palliative Performance Scale  
 CC: CCAC Care Coordinator  
 NP: CCAC Nurse Practitioner  
 EDITH: Expected Death in the Home  
 PPSMCP: Palliative Pain and Symptom Management Consultant Program  
 SDM: Substitute Decision Maker

\*typically PPS >70%  
 \*\* typically PPS 40-60%  
 \*\*\* typically PPS 30% or less

## **Assumptions:**

- 1.** 24/7 Hospice Palliative Care supports will be available in every care setting. (Definition of HPC supports: )
- 2.** Patients are supported to the extent and ability of engagement they chose and consent to.
- 3.** The map is patient/person/family driven, not provider driven
- 4.** Assume client journey starts in whatever care setting they're in (hospital, home, retirement home, LTCH etc.)
- 5.** The 'team' will change based on context
- 6.** Goal to early identify all patients but recognize that patients may have acute illness or aggressive disease diagnosis at any point and in that case the palliative journey starts there.